

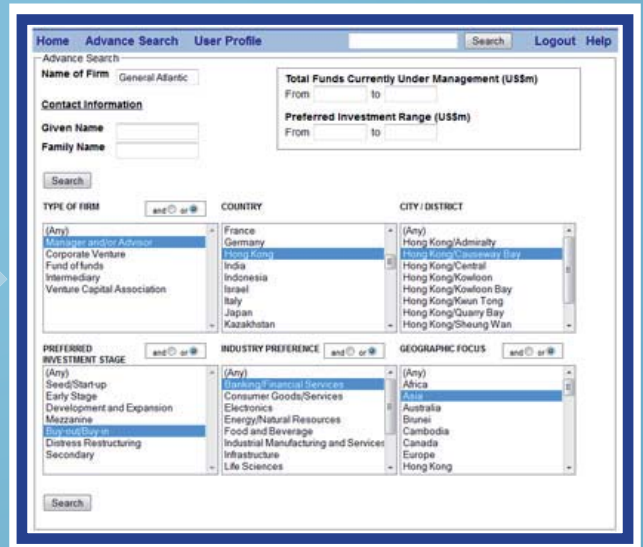
Your Guide to Asian Private Equity Fund Sources

Over 1,600 of private equity fund management firms across Asia, including:

- Managers
- Advisors
- Venture Capital Associations

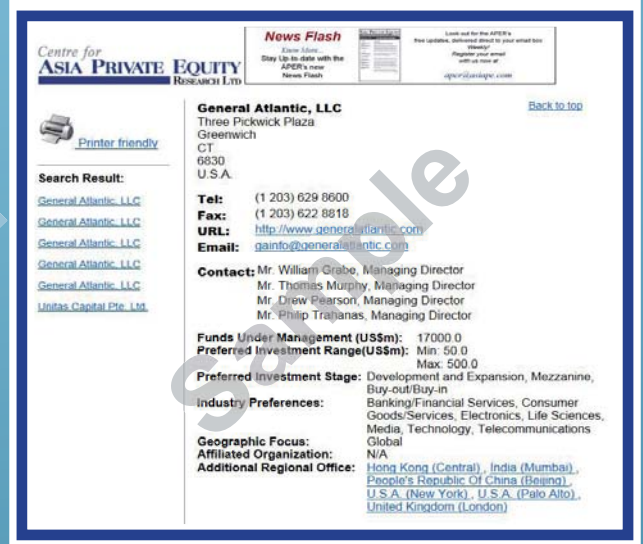
Customised Search

- Company
- Country
- Investment Stage
- Geographic Focus
- Funds Under Management
- Preferred Investment \$ Range
- City
- Type of Firm
- Contact Information
- Industry Preference



Features

- Location
- Industry Preference
- Affiliated Organisation
- Preference on Investment Amounts
- Geographic Focus
- Contact Information



For GP Directory subscription and advertising enquiries, please contact:

Centre for Asia Private Equity Research Ltd.

Tel: (852) 2861-0102

Fax: (852) 2529-6816

Email: directory@asiape.com

Web: www.asiape.com

Subscription Form



Yes, I wish to subscribe to the GP Directory

One Year Subscription - HK\$5,421 / US\$695 / S\$1,126 / GBE459 *(valid until December 2011)*

Personal Details

Name: (Dr/Mr/Mrs/Ms) _____

Company: _____ Job Title: _____

Tel: _____ Fax: _____ Email: _____

Address: _____

Payment Options

Company Cheque, Bank Draft / Money Order in HK Dollars, US Dollars, Singapore Dollars or GB Pound payable to : Centre for Asia Private Equity Research Ltd.

T/T payment to account of: Centre for Asia Private Equity Research Ltd.

at: Hong Kong and Shanghai Banking Corporation
Honwell Commercial Centre Branch, Hong Kong
(MT103 to HSBCHKHHHKH)

in HK\$: Acct No. 173-8-014248

in US\$, S\$, GBP Acct No. 173-7-601896

Credit Card: American Express only (HK\$/US\$) *(4% surcharge applies on payment)*

Card No. _____ / _____ / _____ Expiry ____ / ____

Name on Card: _____

Signature: _____

For GP Directory advertising enquiries, please contact:

Centre for Asia Private Equity Research Ltd.

Tel: (852) 2861-0102

Fax: (852) 2529-6816

Email: directory@asiape.com

Web: www.asiape.com

Centre for
ASIA PRIVATE EQUITY
RESEARCH LTD